



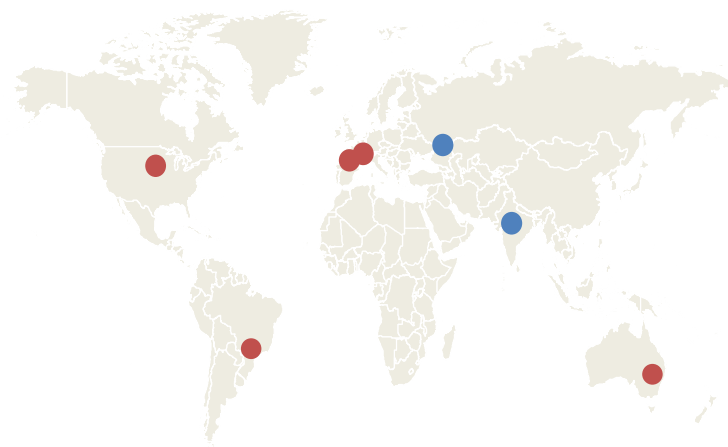
GEOSYSTM
Growing agriculture

***Future-Proofing Ag
Technology Investments***

InfoAg 2015



- Helping agribusinesses make better decisions and take informed action
 - Our contribution
 - Our promise



● Geosys locations

● Partner firms locations



- Shaped by the Past
- Seizing the Present
- Defining the Future



Shaped by the Past



"All the News
That's Fit to Print"

The New York Times

Late Edition

New York: Today, increasing clouds.
High 62-67, Tonight, cloudy, breezy,
showers likely. Low 51-57. Tomorrow,
showers ending. High 58-63. Yesterday:
High 68, low 48. Details on page B6.

VOL. CXXXVII... No. 47,298

Copyright © 1987 The New York Times

NEW YORK, TUESDAY, OCTOBER 20, 1987

Wires beyond 15 miles from New York City:
except on Long Island

30 CENTS

STOCKS PLUNGE 508 POINTS, A DROP OF 22.6%; 604 MILLION VOLUME NEARLY DOUBLES RECORD

U.S. Ships Shell Iran Installation In Gulf Reprisal

Offshore Target Termed a Base for Gunboats

By STEVEN V. ROBERTS
Special to The New York Times

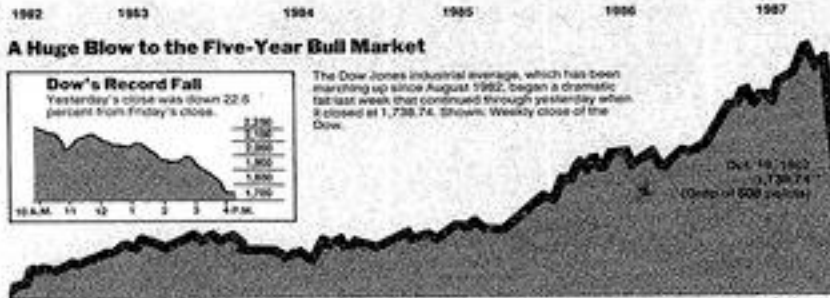
WASHINGTON, Oct. 19 — United States naval forces struck back at Iran today for attacks on American-registered vessels and other Persian Gulf shipping by shelling two connected offshore platforms that American officials said were a base for Iranian gunboats.

A few hours later, a naval commando detachment boarded a third platform five miles away and destroyed radar and communications equipment, Pentagon officials said.

No American casualties were reported in the actions, which occurred 126 miles east of Bahrain at about 2 P.M. (7 A.M. Eastern daylight time).

A 20-Minute Warning

American officials said the attacking force took pains to avoid killing Iranians, giving the crew on the first two platforms a 20-minute warning before four destroyers, stationed about three miles away, began the shelling.



A Huge Blow to the Five-Year Bull Market



The Dow Jones industrial average, which has been marching up since August 1982, began a dramatic falter last week that continued through yesterday when it closed at 1,738.74. Shown: Weekly close of the Dow.

Source: Knight-Ridder Information

The New York Times, Oct. 20, 1987

Does 1987 Equal 1929?

By ERIC GREENMAN

As stock prices soared this year, a chorus of pessimists warned that 1987 was looking more like 1929, when a stock market crash helped to usher in the Great Depression. Yesterday, after a plunge reminiscent of the worst days of 1929, one pressing question was whether the aftereffects would be as devastating to

Moore, director of the Center for International Business Cycle Research at Columbia University.

To be sure, there are some unsettling similarities between the current era and the pre-Depression years. Like the Roaring Twenties, the 1980's have seen an astonishing boom in Wall Street. Now as then, individual and corporate debt



WORLDWIDE IMPACT

Frenzied Trading Raises Fears of Recession — Tape 2 Hours Late

By LAWRENCE J. DE MARIA

Stock market prices plunged in a frenzied wave of selling yesterday, giving Wall Street its worst day in history and raising fears of a recession.

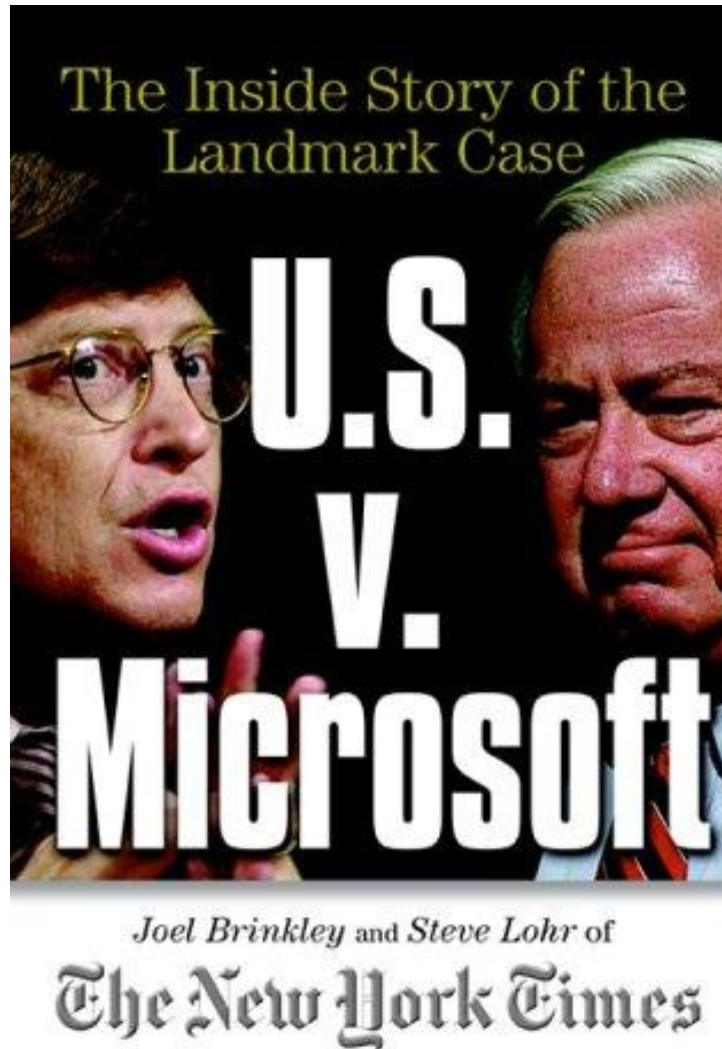
The Dow Jones industrial average, considered a benchmark of the market's health, plummeted a record 508 points, to 1,738.74, based on preliminary calculations. That 22.6 percent decline was the worst since World War I and far greater than the 12.82 percent drop on Oct. 28, 1929, that along with the next day's 11.7 percent decline preceded the Great Depression.

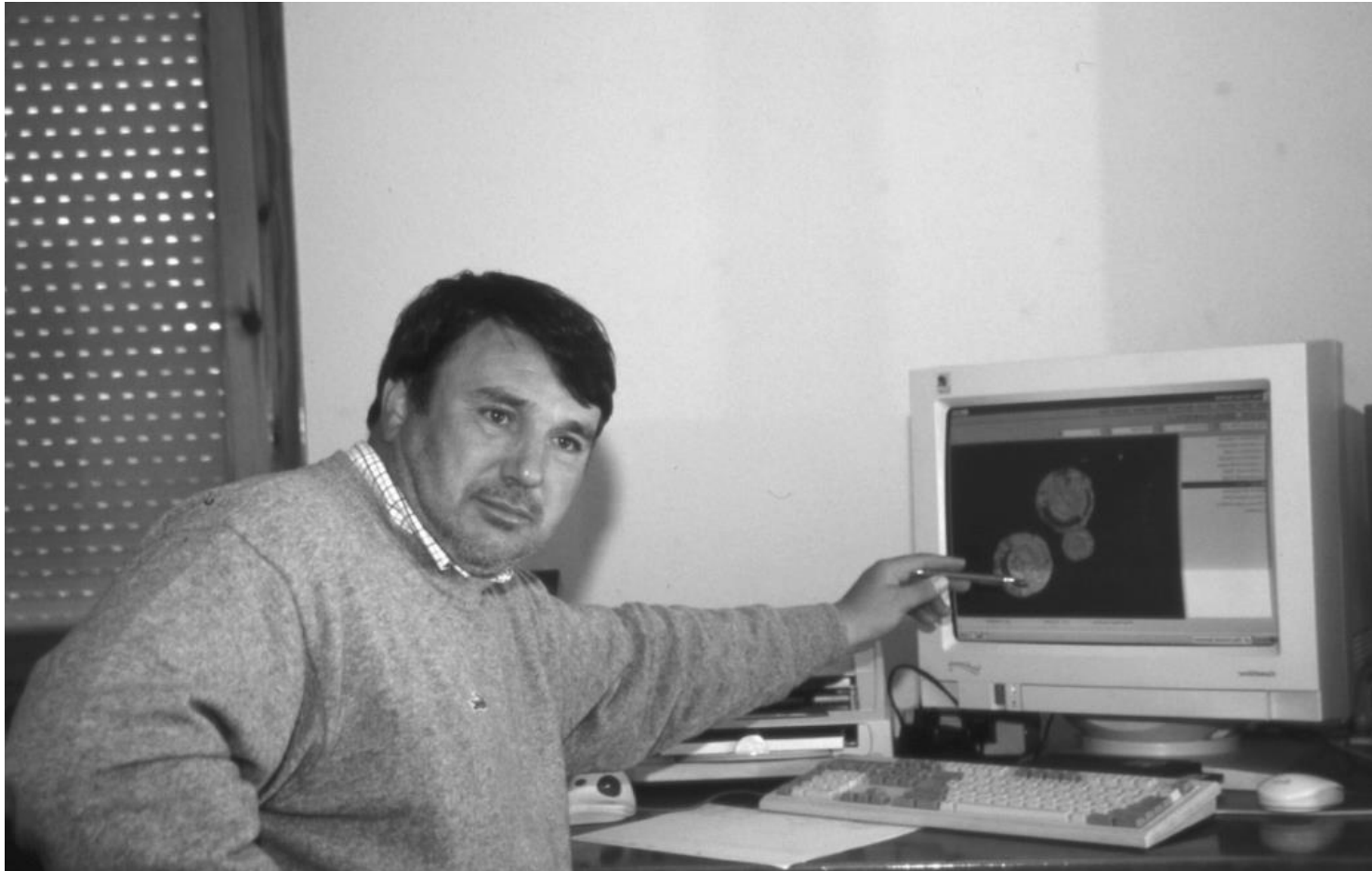
Since hitting a record 2,722.42 on Aug. 20, the Dow has fallen almost 1,000 points, or 36 percent, putting the blue-chip indicator 157.5 points below the level at which it started the year. With Friday's plunge of 168.35 points, the Dow has fallen more than 25 percent in the last two sessions.

Unprecedented Trading

Yesterday's frenzied trading on the nation's stock exchanges lifted volume to a combined total of 1.5 billion shares.

















Increased Precision, Usability and Fit to market

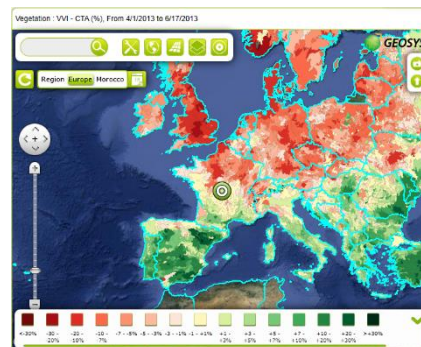
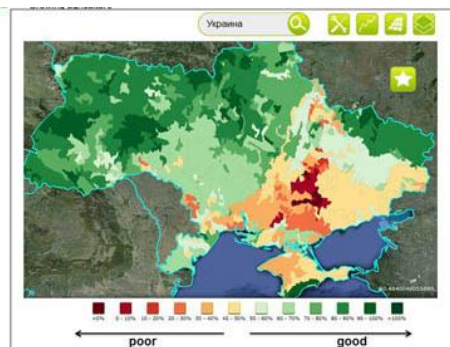
- Imagery and Mapping
 - Field variability and crop growth
- Variable Rate Application Maps
 - Right input in the right place at the right rate
- Customizable
 - Value-added services to enhance customer loyalty





Global Crops growing Conditions Insights

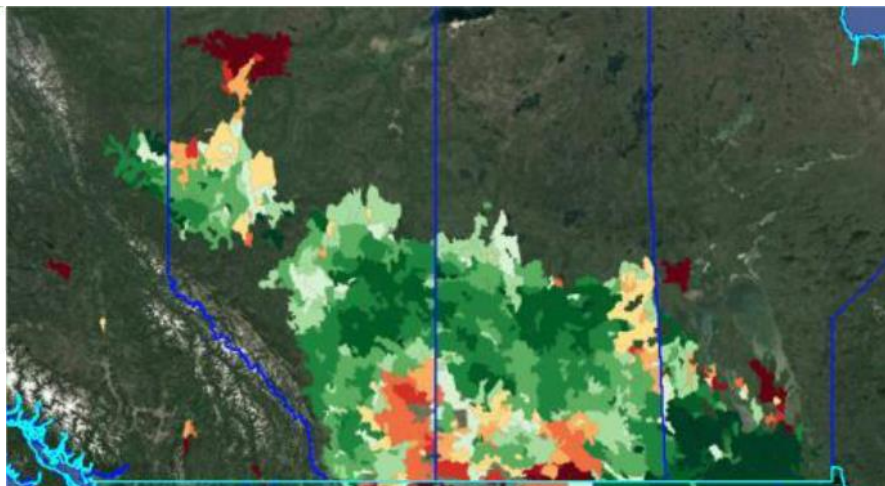
- Daily satellite imagery
- Daily weather data
- Crop analysis Expert support





Global Crops growing Conditions Insights

- Daily satellite imagery
- Daily weather data
- Crop analysis Expert support



Wheat crops were affected by early season dry weather. But precip at the critical pre-flowering stage and rainfall forecast for the grain filling stage are positive. We maintain crop production trend in Canada at a level equivalent to last year: 29 MT when Canadian Wheat Board says 23.1 MT, and USDA says 27.5 MT.

Very good conditions in Manitoba balance heterogeneous conditions in Saskatchewan and Alberta, with some very bad spots in these two regions

- ✧ Expansion in New Fields
 - Global reach
- ✧ Expanded Partnerships
 - Building the agriculture of the future



LAND O'LAKES, INC.



Seizing the Present

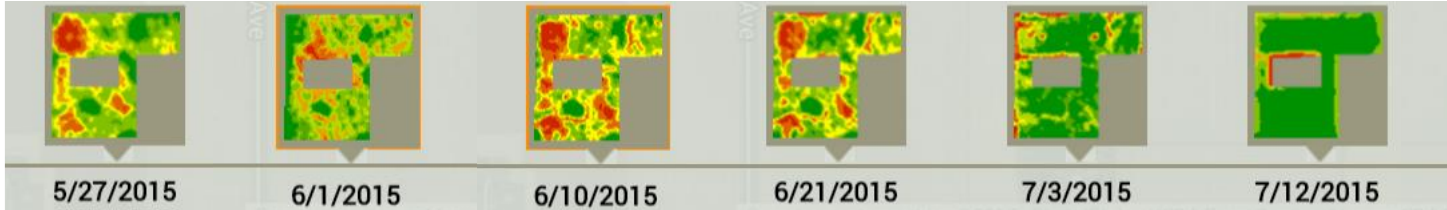
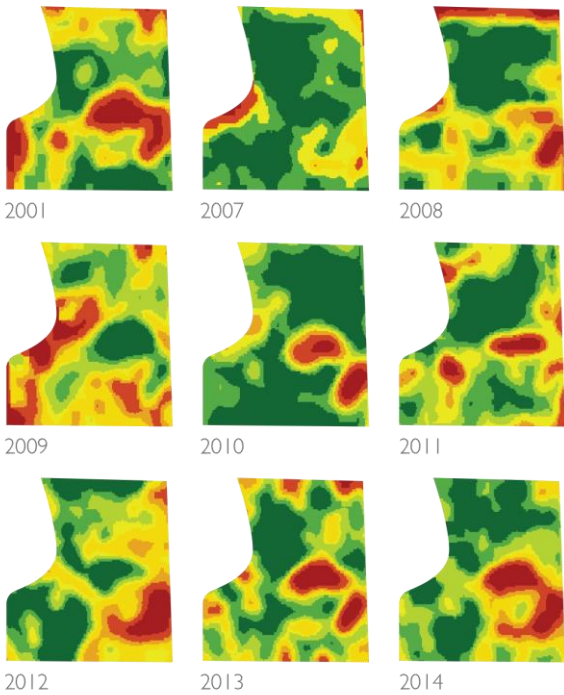
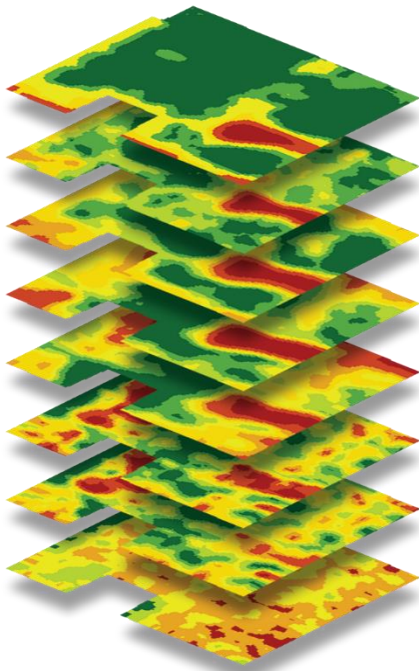
➤ A Platform for Actionable Insights

- Archive Satellite data
 - Up to 15 years
- Fresh Insights
 - Maps and data directly to existing platforms
- In-Season Imagery
 - 3x the images



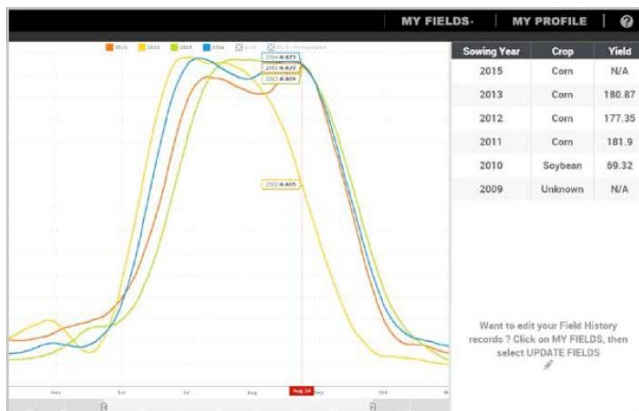


8+
maps
per field



➤ Informed Decision Making Every Day

- Fresh Insights
 - Two satellite passes every day
- Scout Smarter
 - Prioritize workloads
- Historical Data
 - Compare current performance to previous years
- Daily Weather
 - Historical vs. forecast



WELCOME NICK OHRTMAN

MY FIELDS ▾

MY PROFILE

HELP ▾

CORN



↑ 1

35

↓ 5

TREND

SOYBEAN




↑ 1

20

↓ 3

TREND

OATS

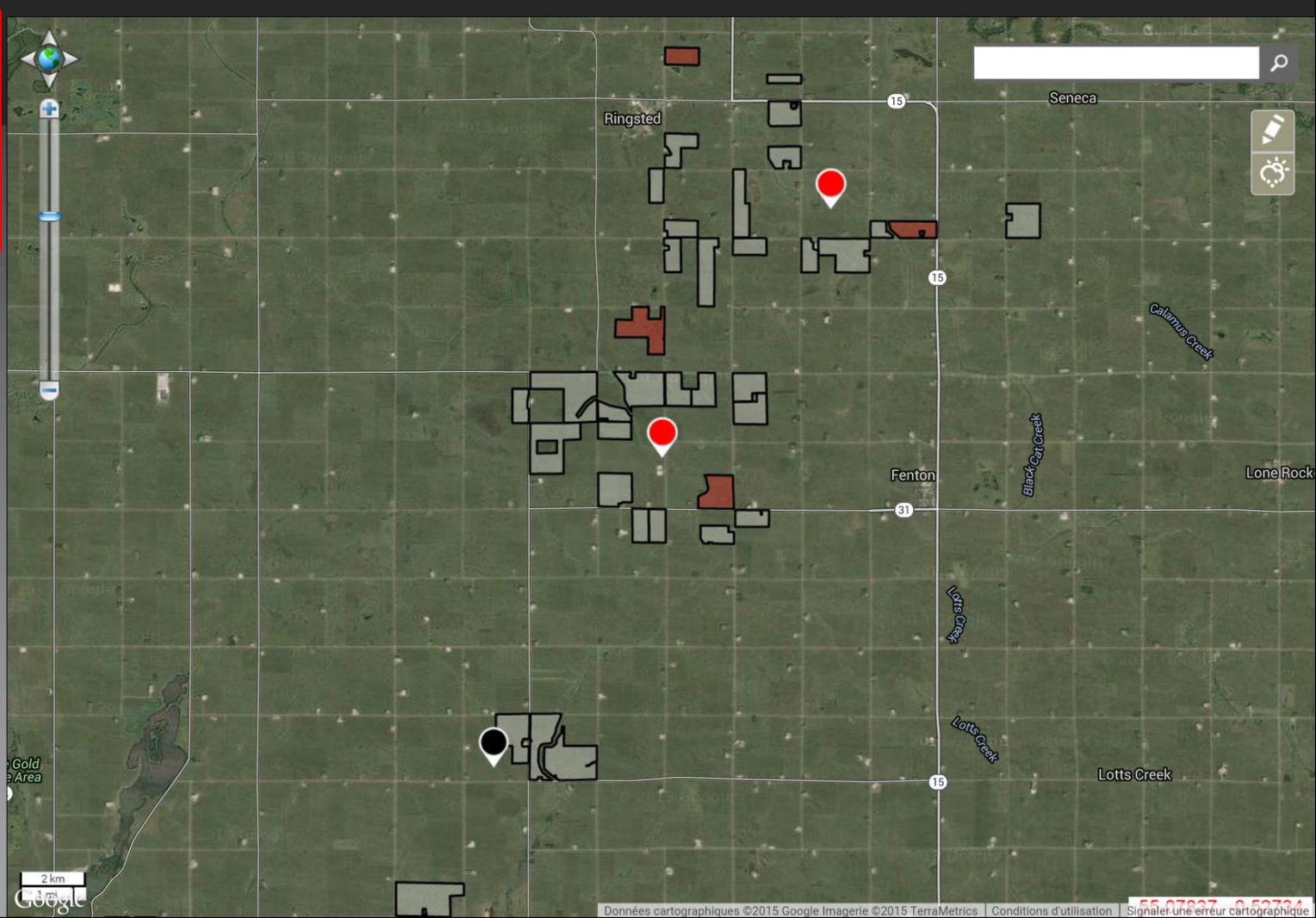



↑ 0

0

↓ 1

TREND



 **west hinch**

Vigor status

Trend status

Crop

Sowing date

Farm

Grower

Area

Last Vegetative Map

▼

▲

Corn

4/23/2015

Farm of GROWER

.Me

Me Grower

190.74ac

7/12/2015

History

Comparison

Vegetative Map

▶

▶

▶


◀

Back




Sowing Year	Crop	Yield
2014	Soybean	39
2013	Unknown	N/A
2012	Unknown	N/A
2011	Unknown	N/A
2010	Unknown	N/A

Want to edit your Field History records ? Click on MY FIELDS, then select UPDATE FIELDS







 **Johnson 80**

Vigor status

Trend status

Crop

Sowing date

Farm

Grower

Area

Variety

Last Vegetative Map

—

▼

Corn

4/29/2015

Farm of

Nick O

76.03ac

Dekalb

7/20/2015

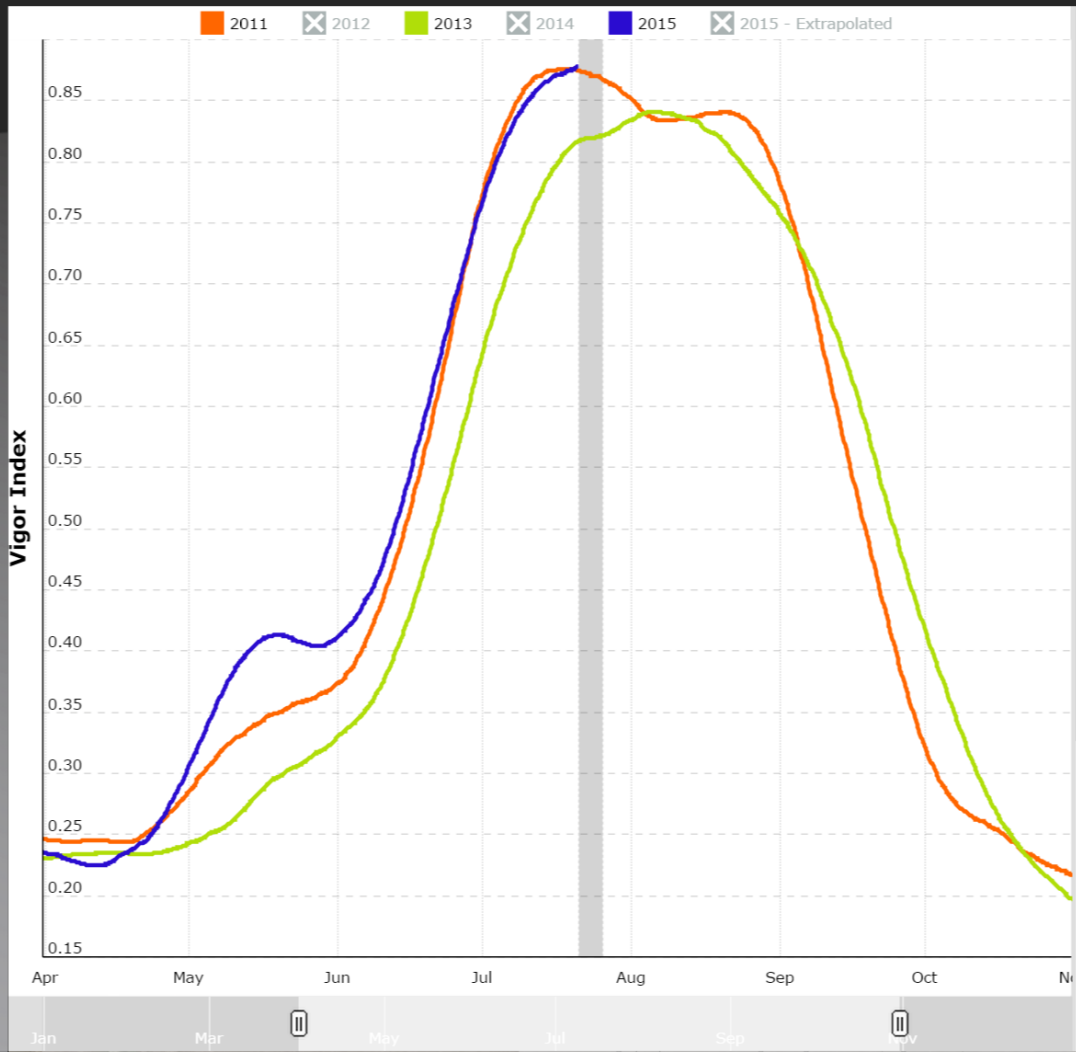
History

Comparison

Vegetative Map

◀

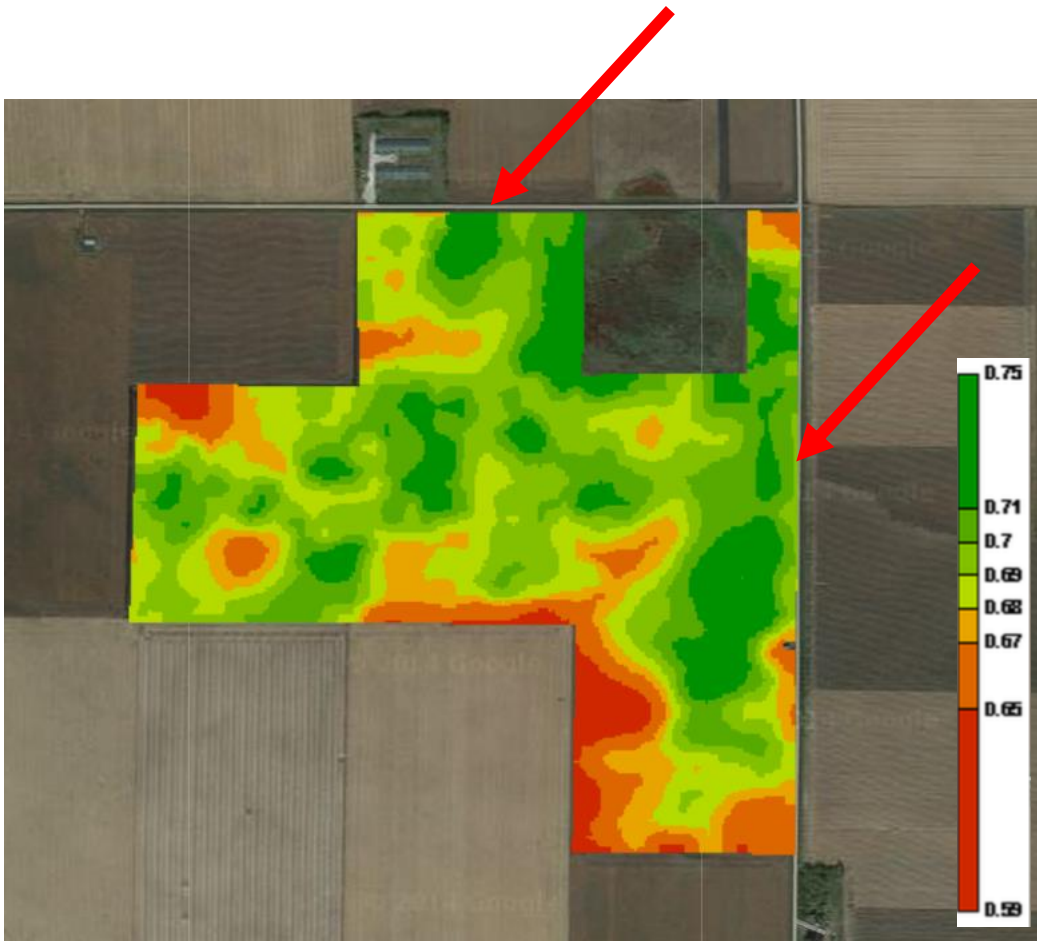
Back



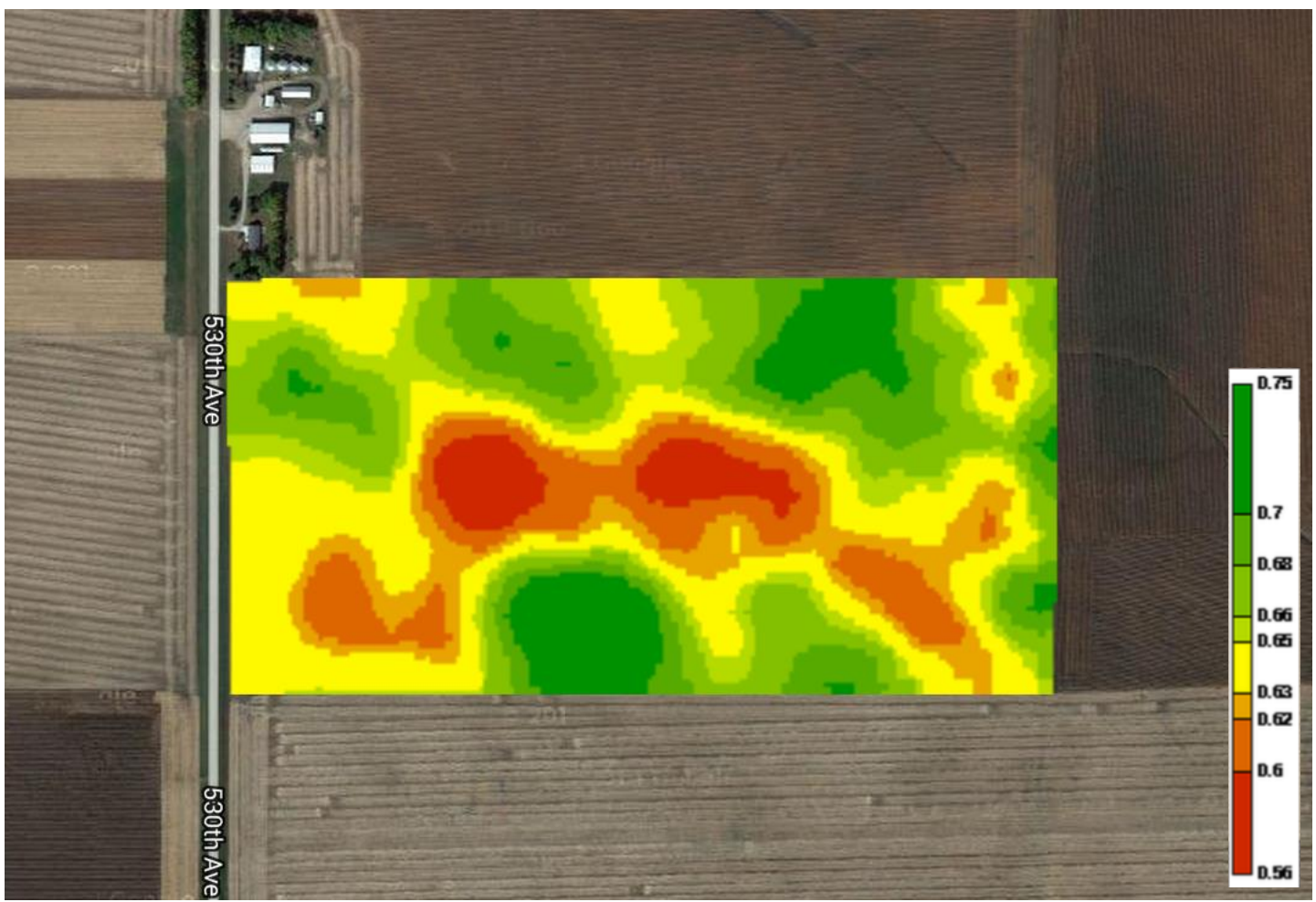
Sowing Year	Crop	Yield
2014	Soybean	51.6
2013	Corn	195.09
2012	Soybean	56.87
2011	Corn	198.49
2010	Soybean	58.86
2009	Unknown	N/A
2008	Unknown	N/A
2007	Unknown	N/A
2006	Unknown	N/A
2005	Unknown	N/A
2004	Unknown	N/A

Want to edit your Field History records ? Click on MY FIELDS, then select UPDATE FIELDS












CORN

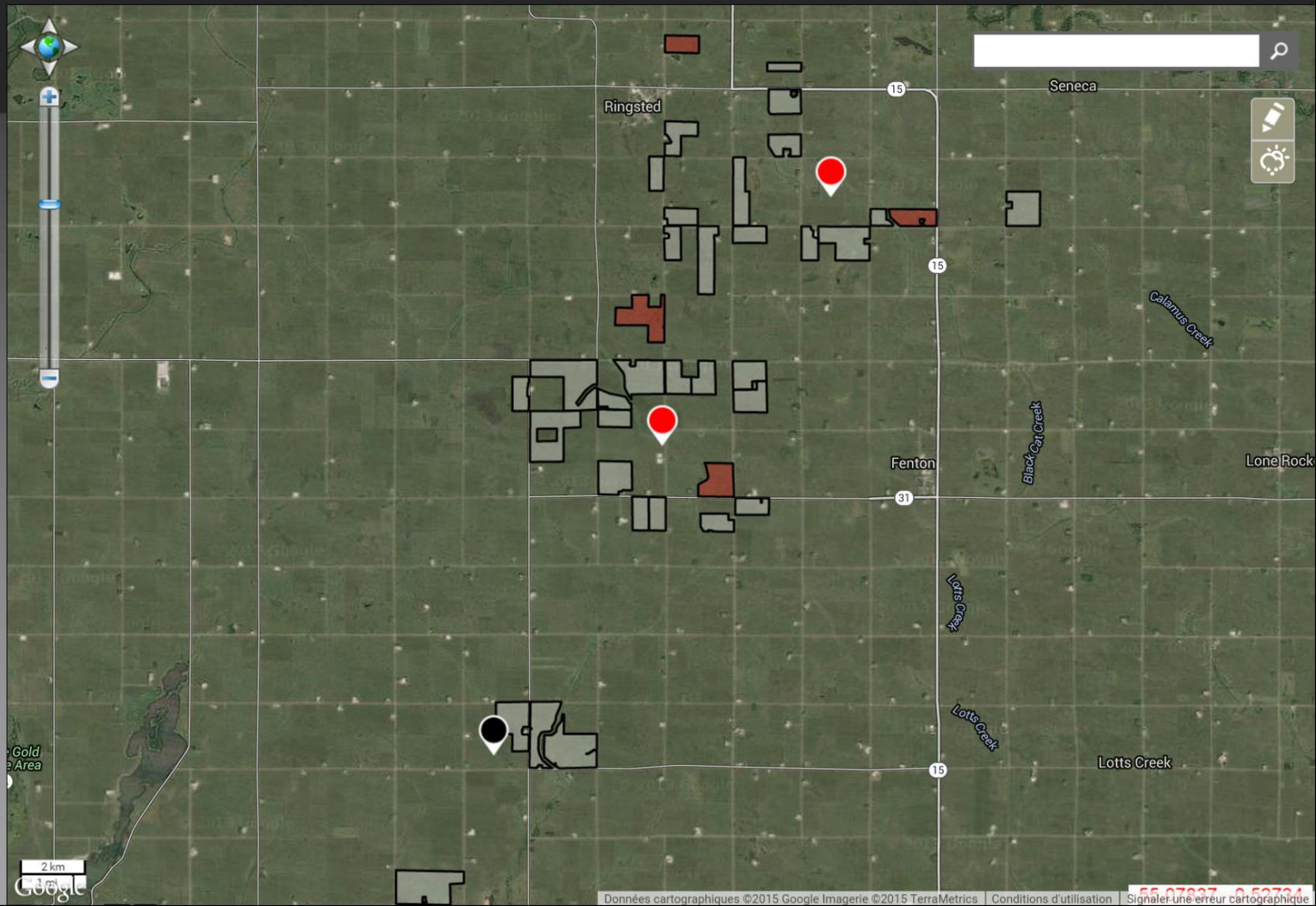
	↑	1	 TREND
	—	35	
	↓	5	

SOYBEAN

	↑	1	 TREND
	—	20	
	↓	3	

OATS

	↑	0	 TREND
	—	0	
	↓	1	

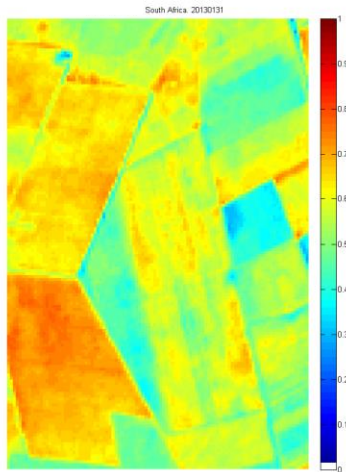




Defining the Future



- Speed of Innovation
- Simplify Access
- Provide Action
- Real Solutions
- Data Succession Planning

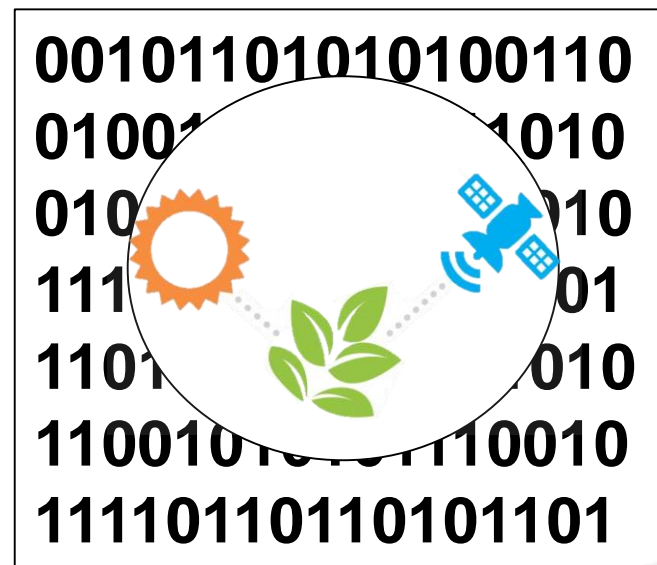




- Higher Technology Adoption Rate
- Putting Field Data to Use
- From Field to Cloud
- More Consolidation
- Rapid Market Penetration
- Saving Time and Money

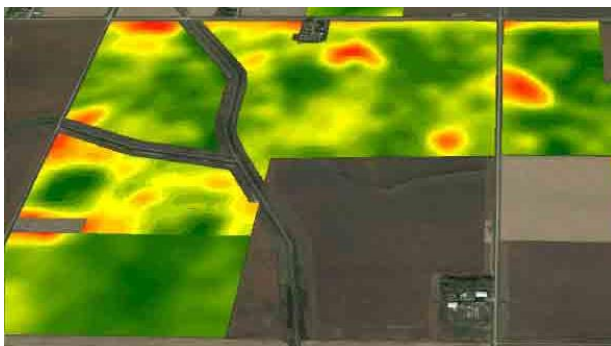


- New Products, New Capabilities
- Fresh, Consistent and Frequent
- Virtual Constellation
- Specific Crop Diseases
- Answer the Why Behind the Data
- Tailored Data for Unique Needs





- More Data Available
 - Plan for future data needs
- Need for Consistency
 - Help save time and make better decisions
- Maintain New Tech
 - Scalable for the future
- Smart Partnerships





QUESTIONS?



GEOSYS™
Growing agriculture



THANK YOU!

www.geosys.com

