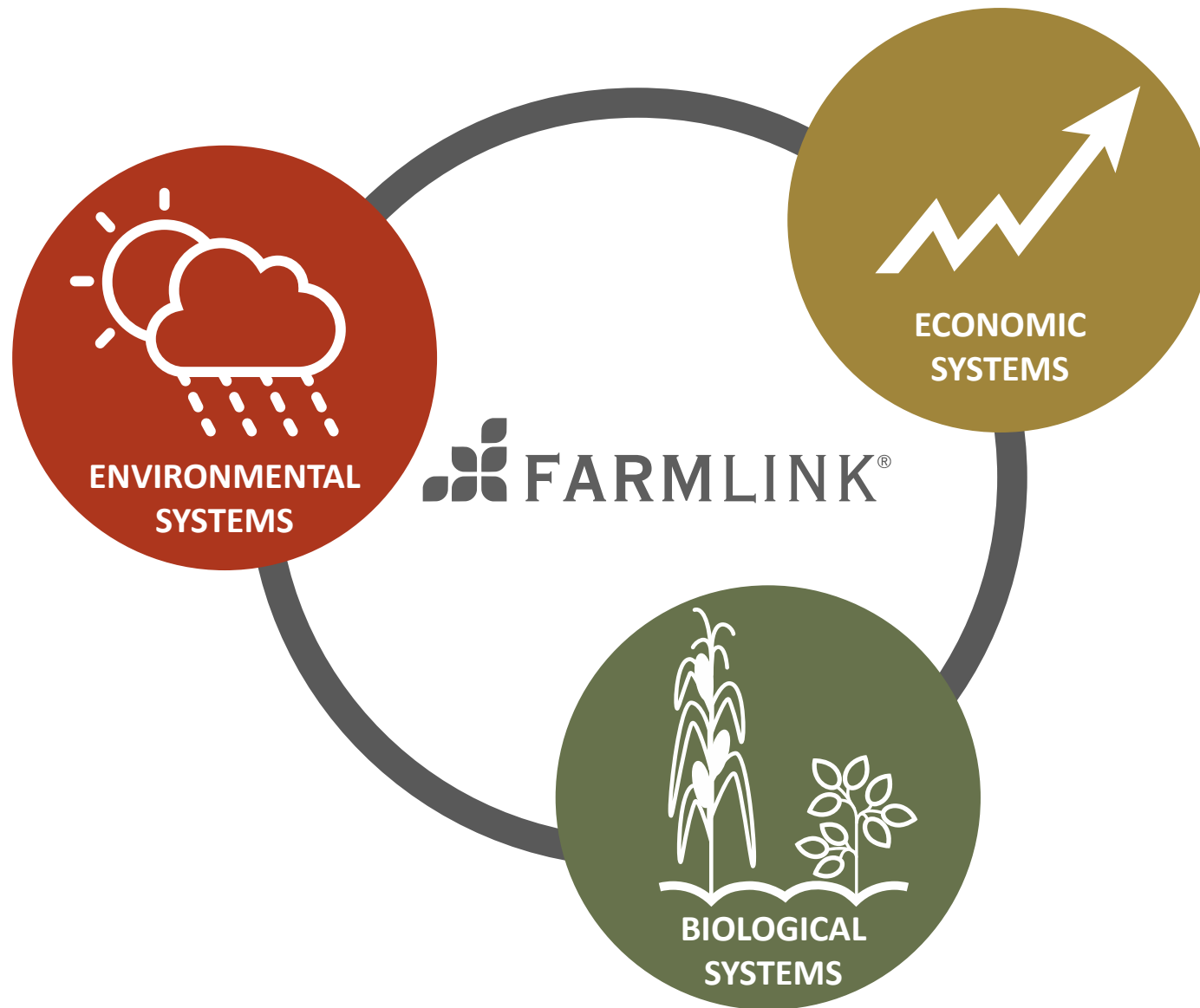


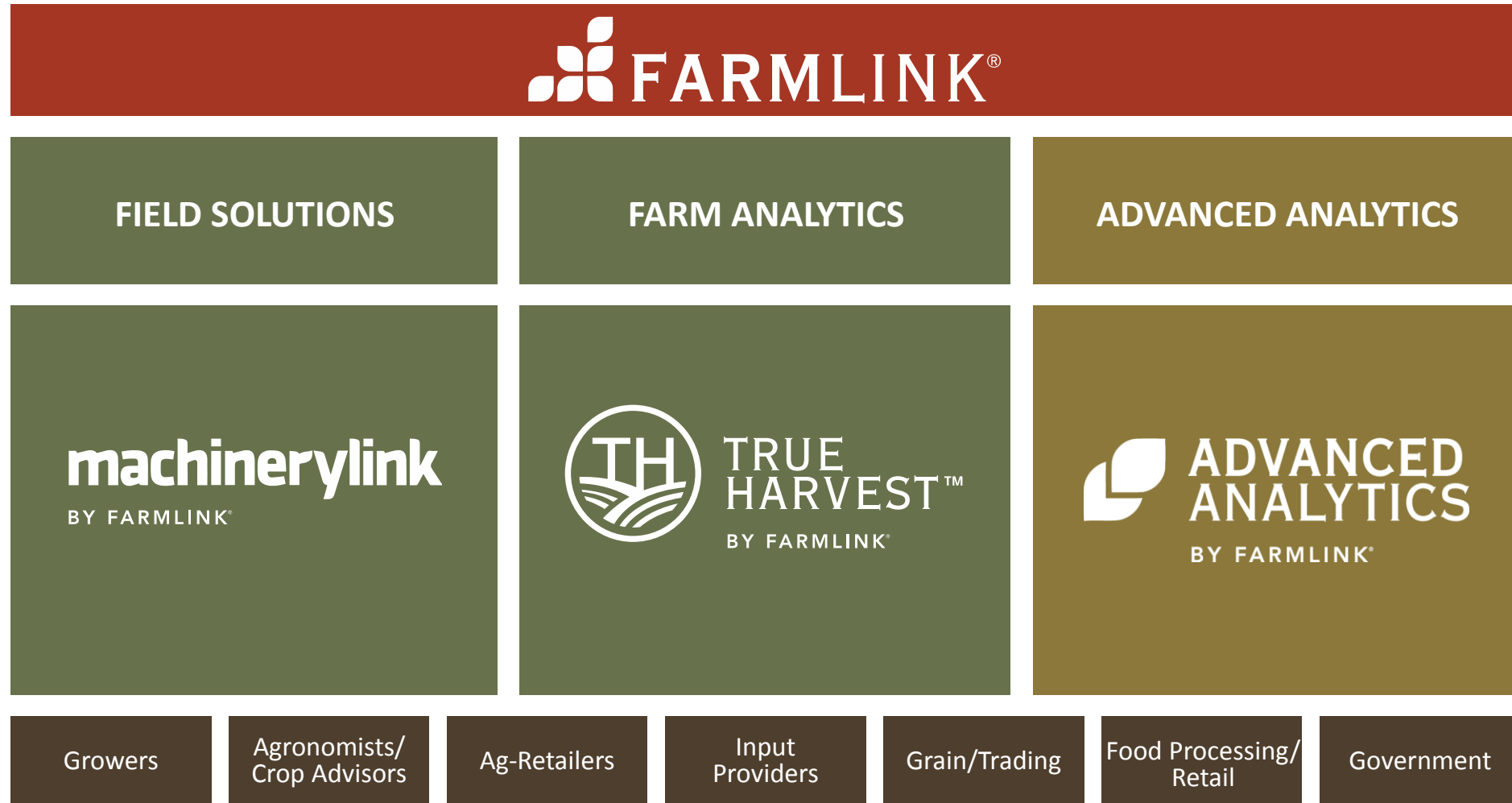


# Transforming Agriculture with Data Science – Ag's Next Revolution

Randy Barker  
July 30<sup>th</sup> , 2015



FarmLink is committed to applying new technology and business models to accelerate the pace of innovation in agriculture and across the food system



**FarmLink is a unique combination of on-farm data collection,  
nationwide footprint, and world-class data science**



Data off managed  
fleet of 200+  
combines



6M+ acres of  
calibrated  
yield results



Rigorous QA  
& validation



800M unique micro-  
fields reflecting 60+  
variables

**Unmanaged**  
Data Collection

vs.

**Managed** FarmLink  
Data Collection

## Unmanaged Data Collection

**Produces** data of  
varying type & quality

vs.

## Managed FarmLink Data Collection

**Produces** research standard,  
modeling quality data

## Unmanaged Data Collection

Produces data of  
varying type & quality



**Supports** mass data  
aggregation for  
trend analysis

VS.

## Managed FarmLink Data Collection

Produces research standard,  
modeling quality data



**Supports** advanced data  
science & analytics for granular,  
geo-referenced analysis

## Unmanaged Data Collection

**Produces** data of  
varying type & quality



**Supports** mass data  
aggregation for  
trend analysis

## Managed FarmLink Data Collection

**Produces** research standard,  
modeling quality data



**Supports** advanced data  
science & analytics for granular,  
geo-referenced analysis



**Provides** actionable insights  
for zone level implementation



## Unmanaged Data Collection

vs.

## Managed FarmLink Data Collection

**Produces** data of  
varying type & quality



**Supports** mass data  
aggregation for  
trend analysis

**Produces** research standard,  
modeling quality data



**Supports** advanced data  
science & analytics for granular,  
geo-referenced analysis



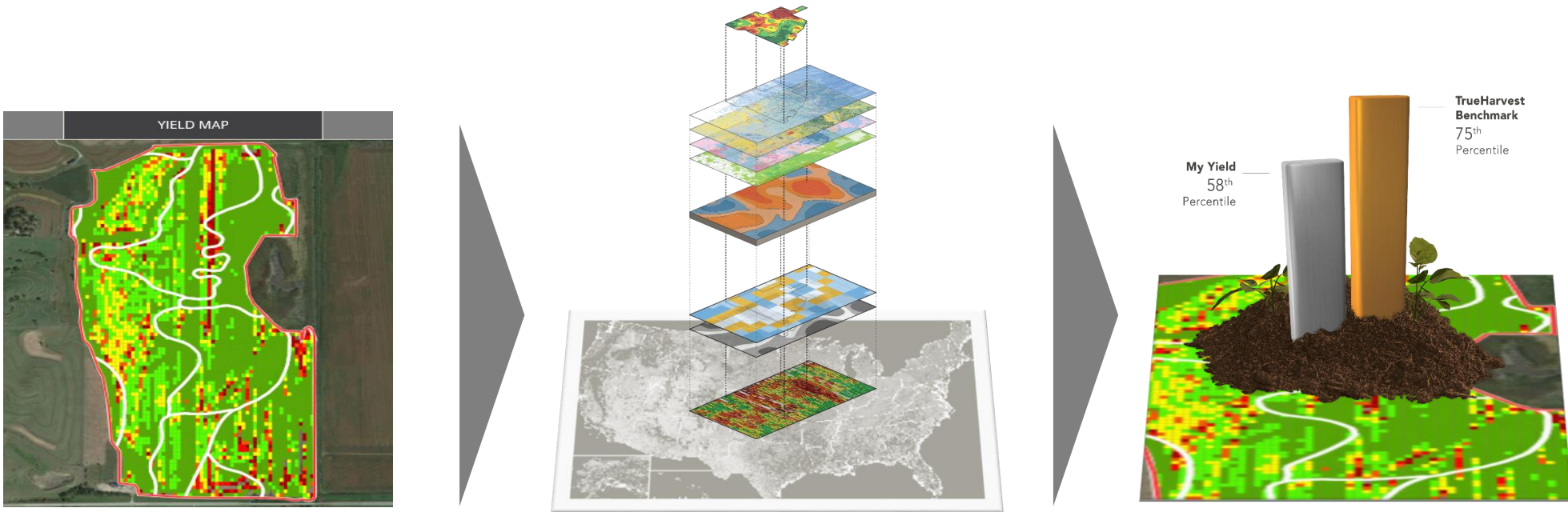
**Provides** actionable insights  
for zone level implementation



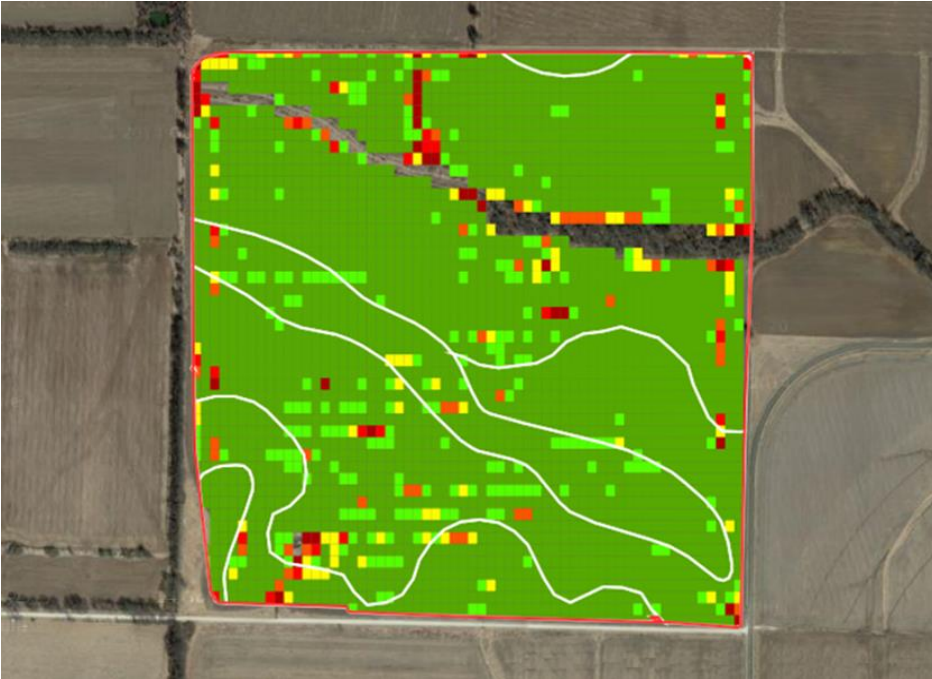
# TrueHarvest

Precision Benchmarking Solution

# TrueHarvest transforms “big-data” into actionable insight – Benchmarking yield vs. opportunity



# Identifying performance vs. potential



## Yield View

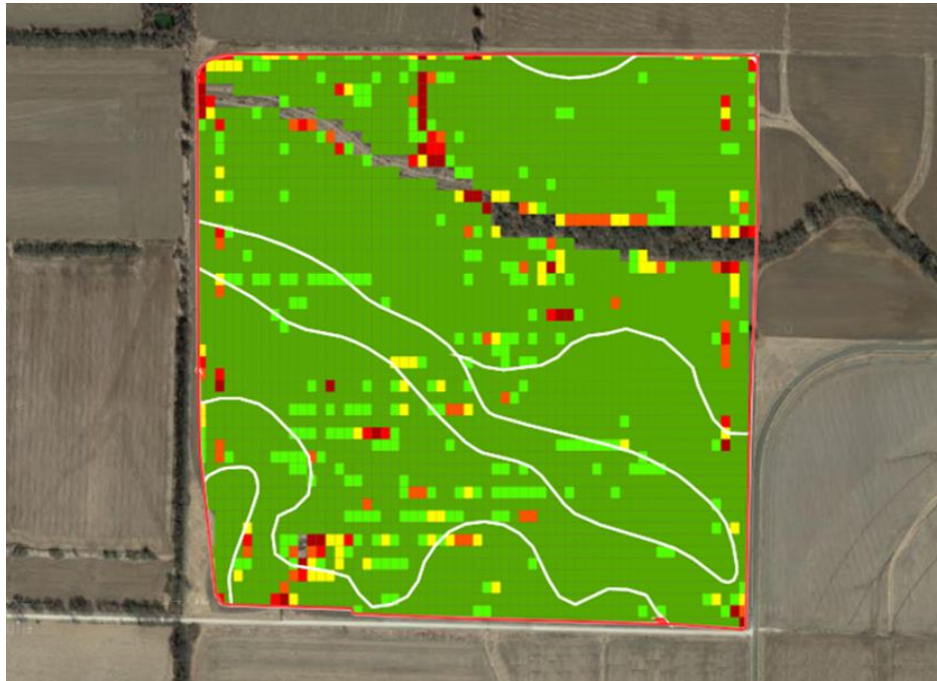
Crop: 2014 Corn

Acres: 152 ac.

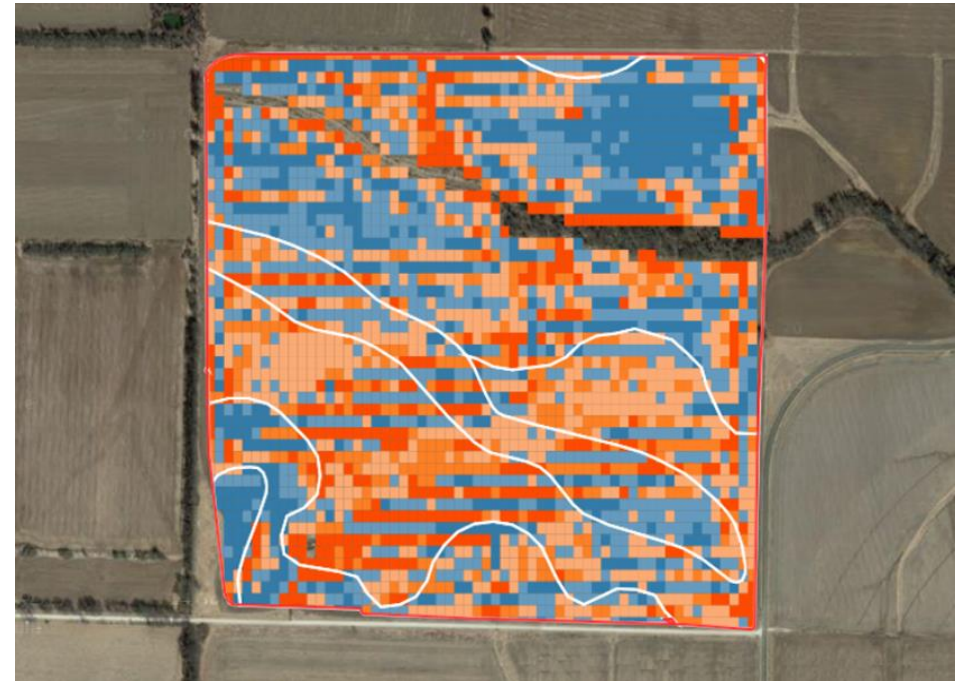
Actual Performance: 67%

Actual Yield: 225 Bu/A

# Identifying performance vs. potential



**Yield View**



**Benchmark View**

Crop: 2014 Corn

Acres: 152 ac.

Actual Performance: 67% → Target Performance: 80%

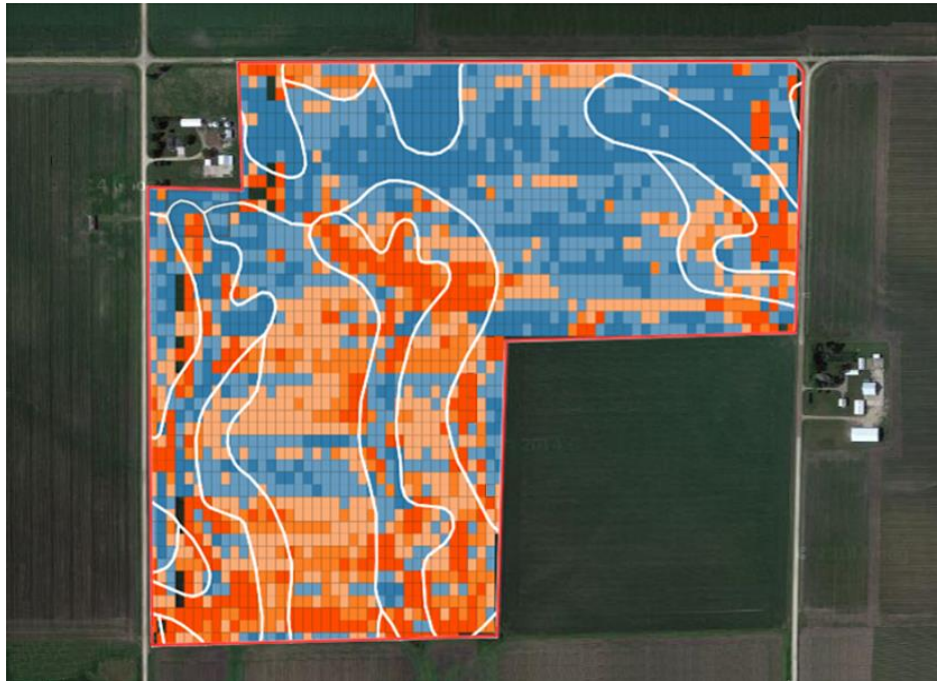
Actual Yield: 225 Bu/A → Target Yield: 242 Bu/A

**Yield Gap: 17 Bu/A**

**Opportunity: \$10,982**

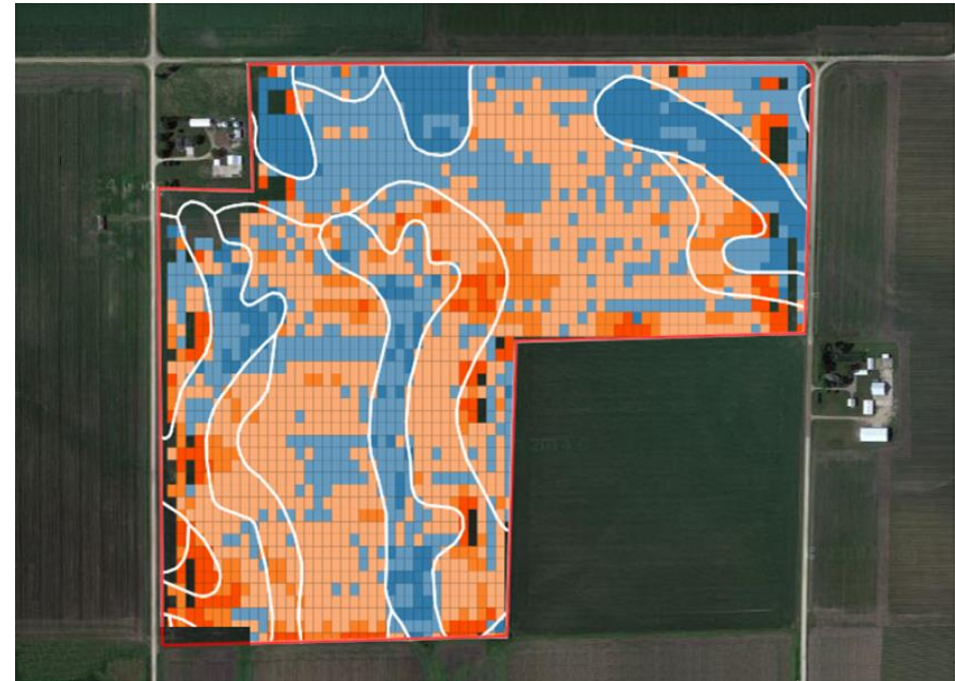


## Performance year over year is measurable



### 2013 Corn

Acres: 123 ac.  
Actual Performance: 80%  
Actual Yield: 261 Bu/A  
Target Performance: 90%  
Target Yield: 275 Bu/A  
Opportunity: \$7,318



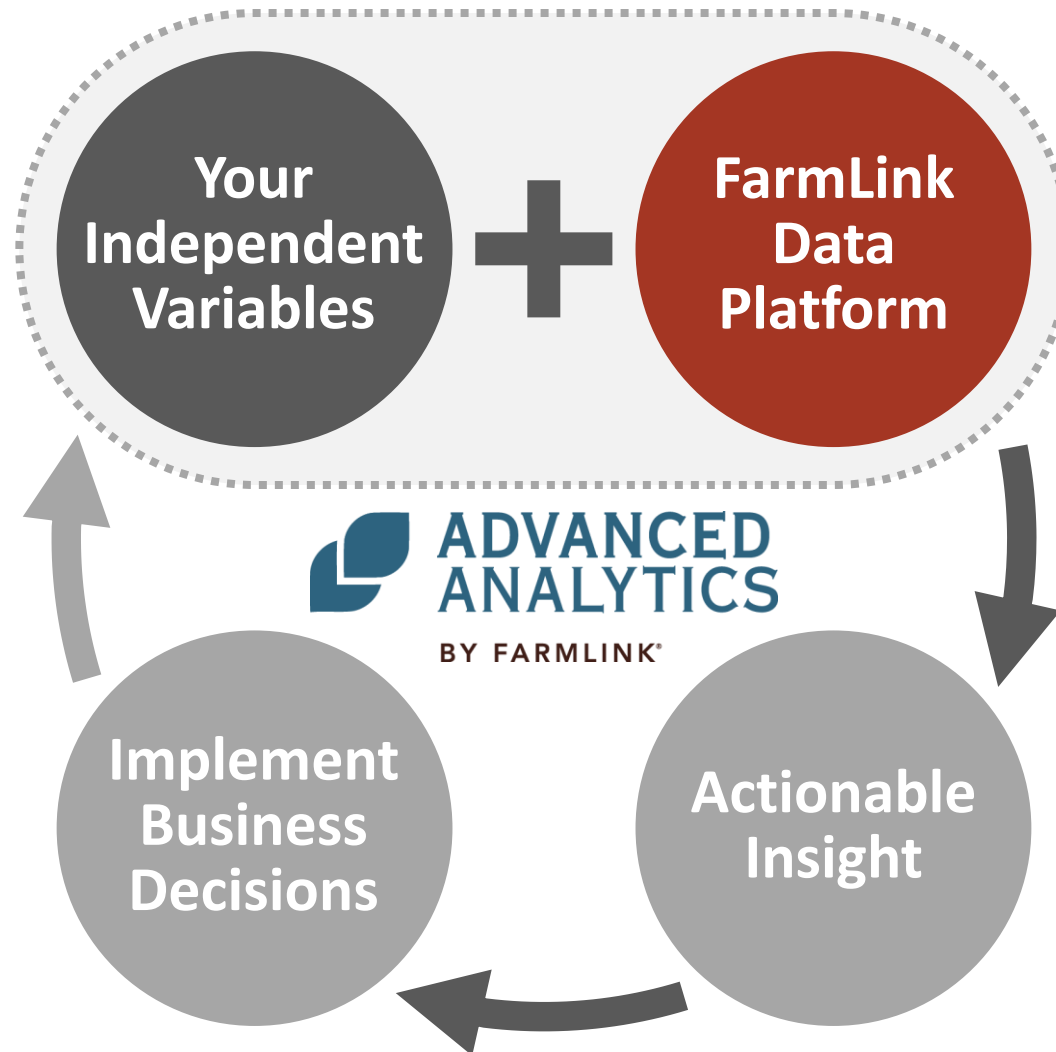
### 2014 Corn

Acres: 123 ac.  
Actual Performance: 55%  
Actual Yield: 219 Bu/A  
Target Performance: 60%  
Target Yield: 236 Bu/A  
Opportunity: \$8,364



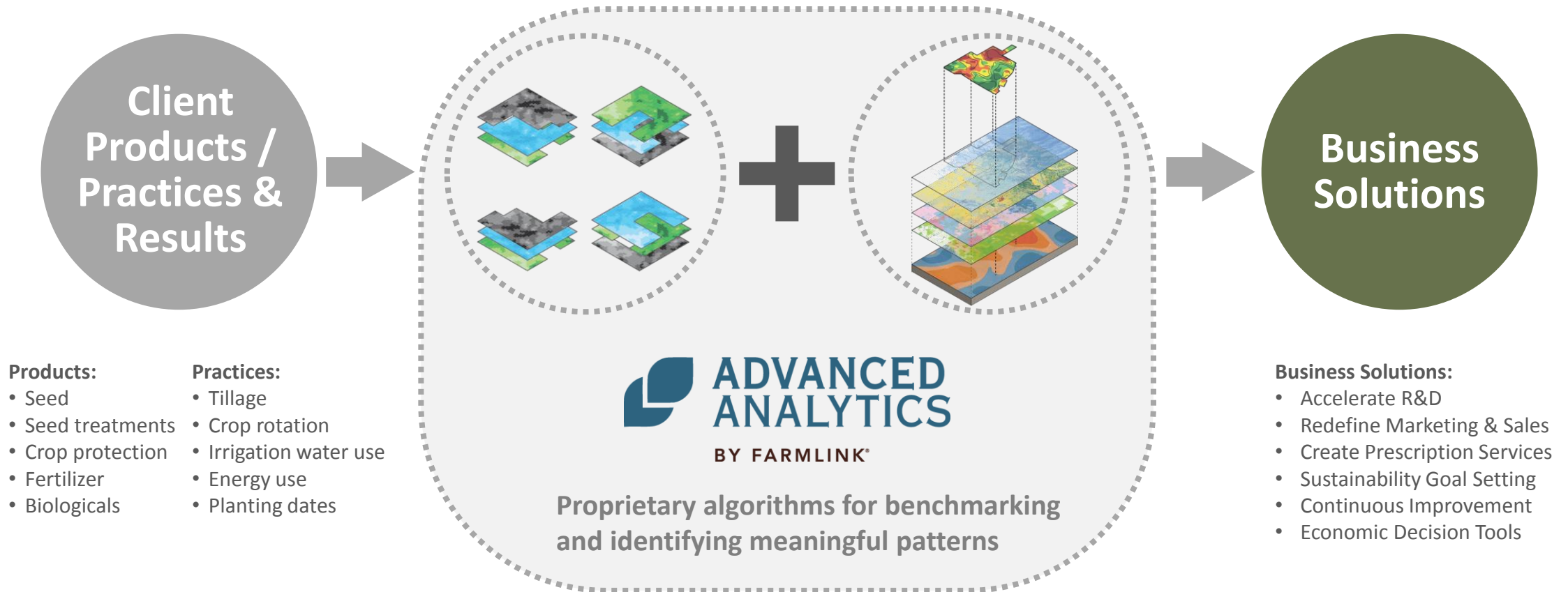
Advanced Analytics  
The Insights Engine

**FarmLink's Advanced Analytics division transforms client's independent variables into business decisions**

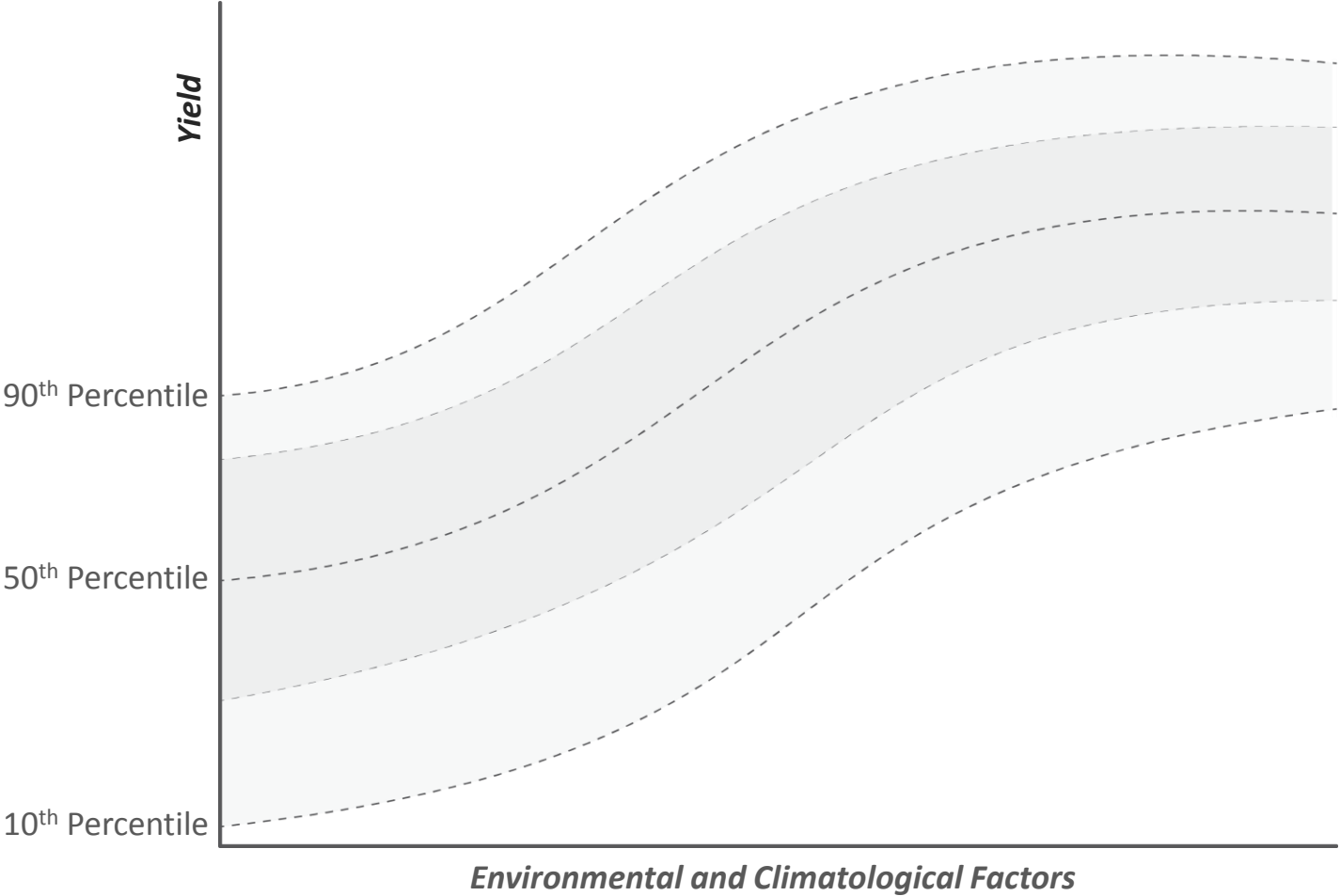




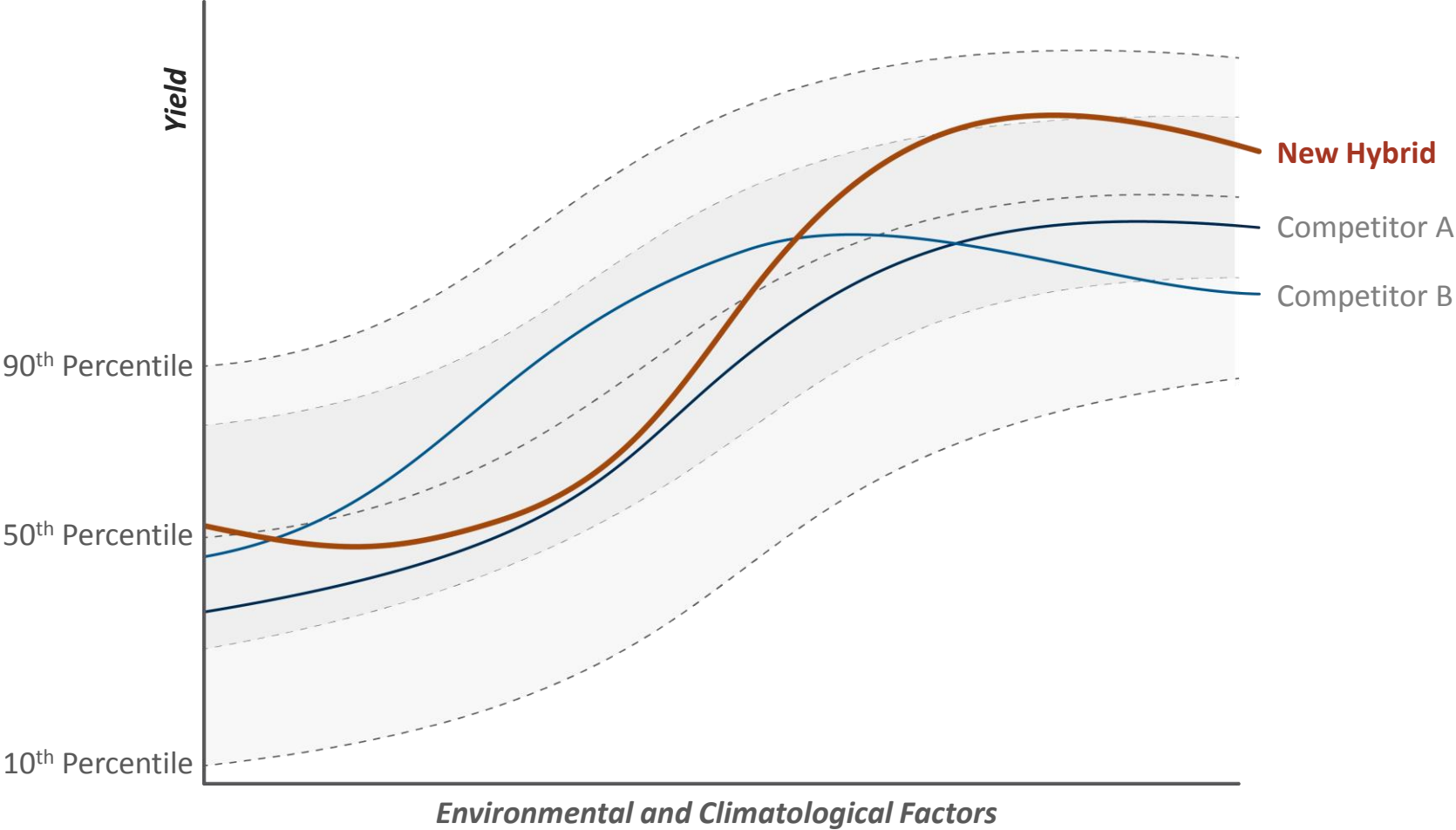
# FarmLink's Advanced Analytics division transforms client's independent variables into business decisions



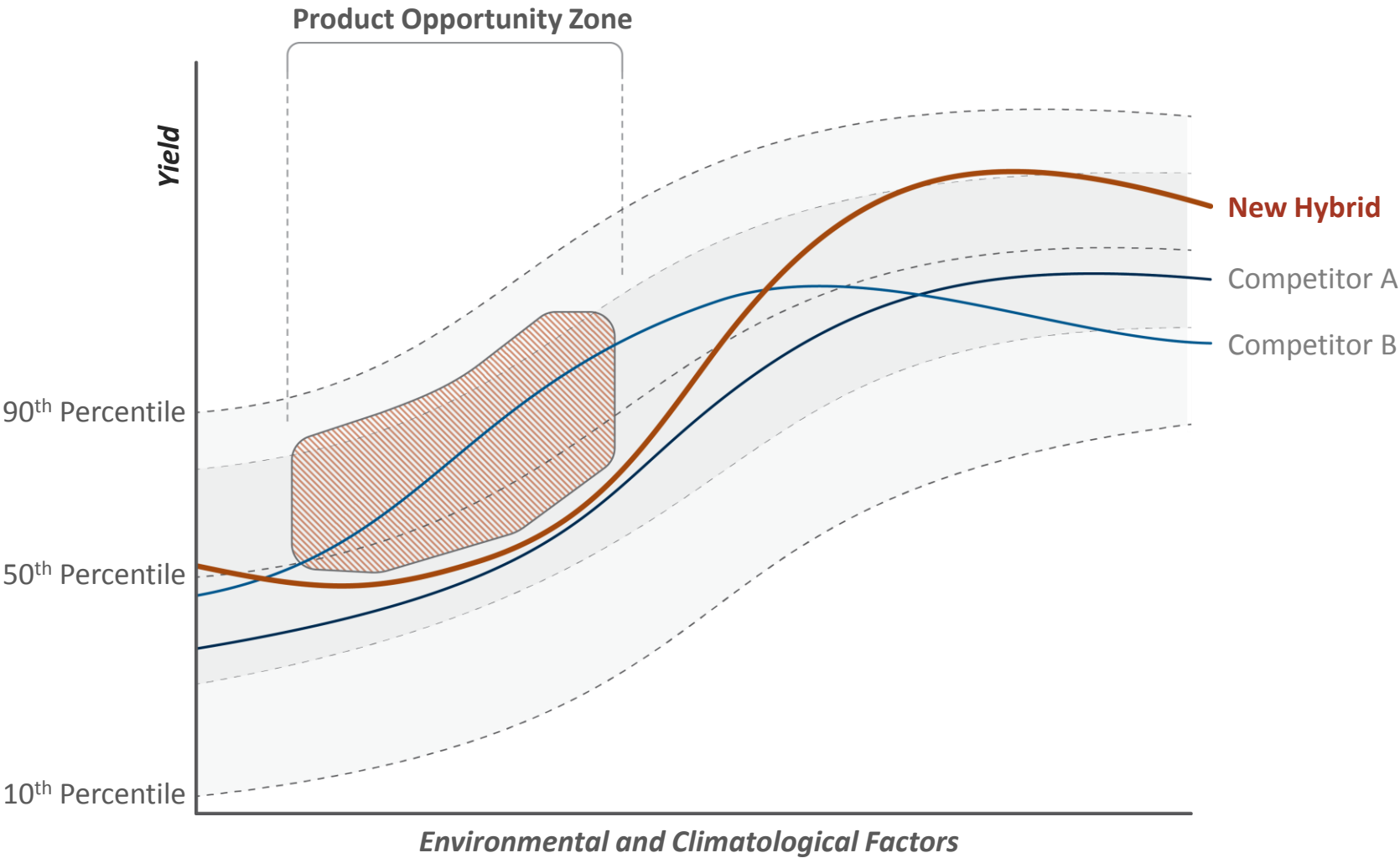
**Benchmark performance drives insight  
that inform strategic decisions**



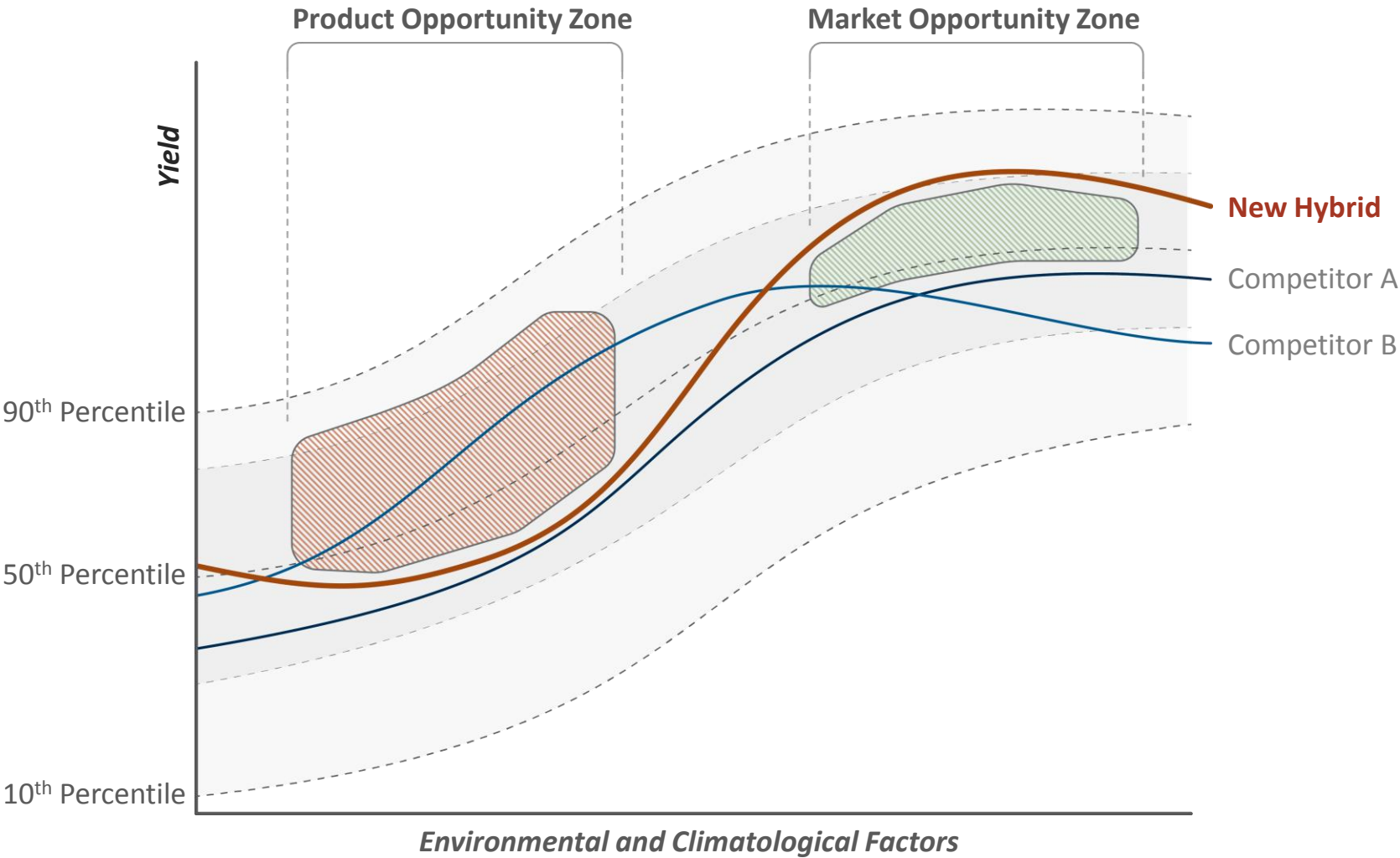
Benchmark performance drives insight  
that inform strategic decisions



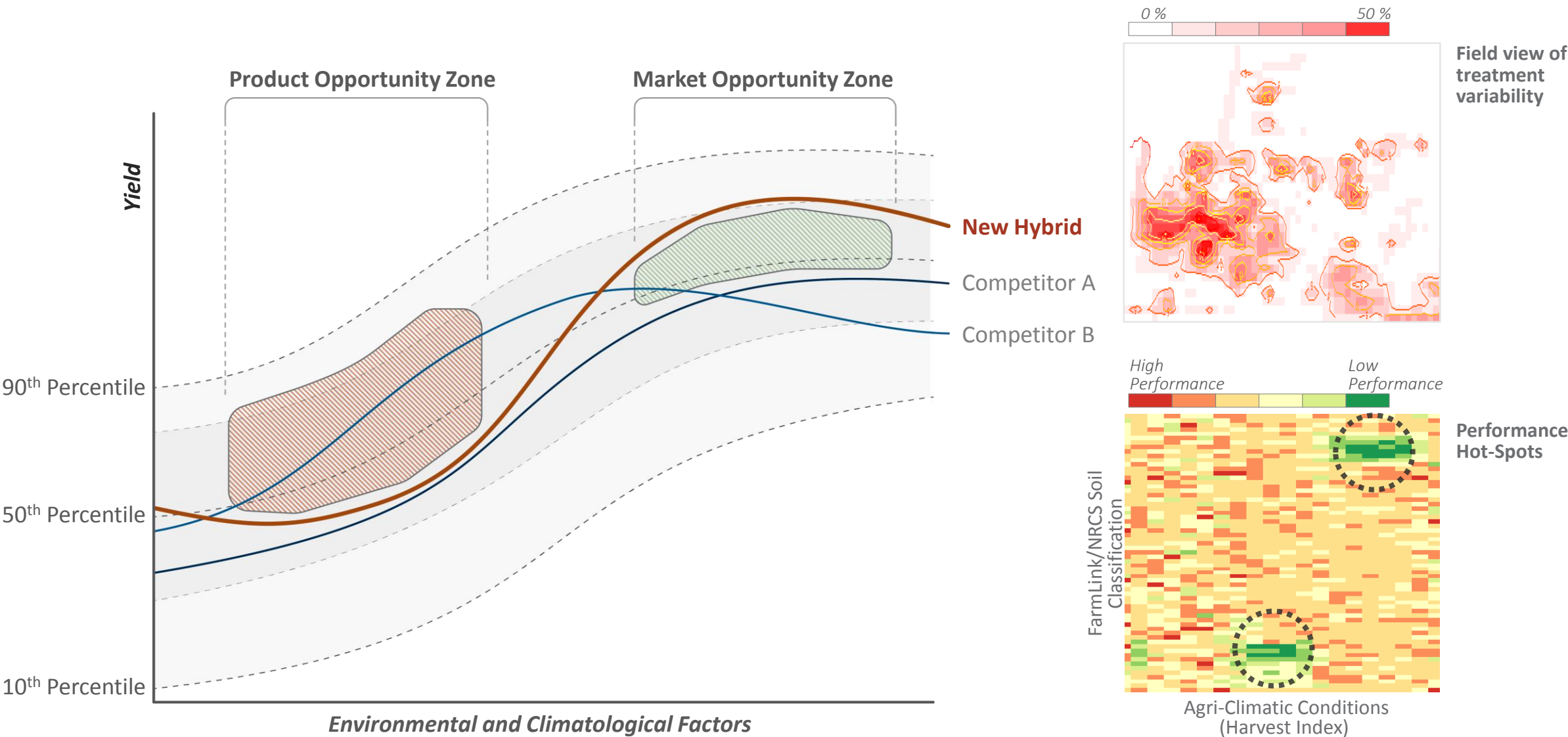
Benchmark performance drives insight  
that inform strategic decisions



Benchmark performance drives insight that inform strategic decisions



# Benchmark performance drives insight that inform strategic decisions



# FarmLink Advanced Analytics allows companies to enhance their agronomy solutions

Identify Agronomic Problem



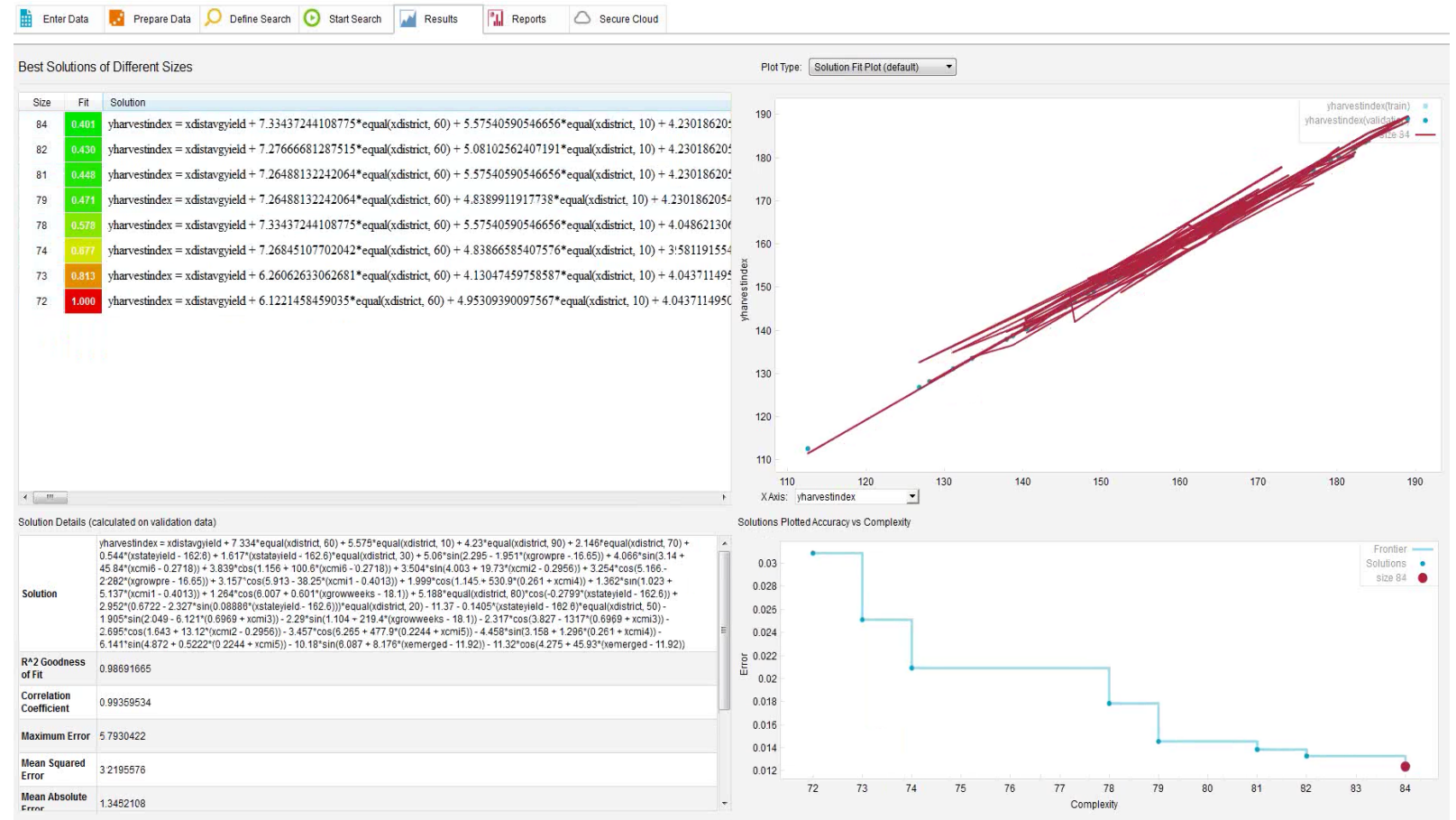
Review client data history, scope & format



Setup Environmental/Biological Response Model



**Advanced Recommendation Model**



FarmLink is solving the most complex challenges facing agriculture now and in the future through data science, technology, and quality data

